

General Description

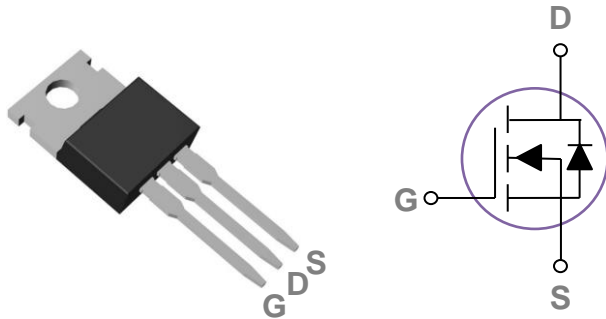
These N-Channel enhancement mode power field effect transistors are planar stripe, DMOS technology. This advanced technology has been especially tailored to minimize on-state resistance, provide superior switching performance, and withstand high energy pulse in the avalanche and commutation mode. These devices are well suited for high efficiency switch mode power supply.

BVDSS	RDSON	ID
600V	1.2Ω	7A

Features

- Improved dv/dt capability
- Fast switching
- 100% EAS Guaranteed
- Green Device Available

TO220 Pin Configuration



Applications

- High efficient switched mode power supplies
- TV Power
- Adapter/charger
- Server Power
- PV Inverter / UPS

Absolute Maximum Ratings $T_c=25^\circ\text{C}$ unless otherwise noted

Symbol	Parameter	Rating	Units
V_{DS}	Drain-Source Voltage	600	V
V_{GS}	Gate-Source Voltage	± 30	V
I_D	Drain Current – Continuous ($T_c=25^\circ\text{C}$)	7	A
	Drain Current – Continuous ($T_c=100^\circ\text{C}$)	4.4	A
I_{DM}	Drain Current – Pulsed ¹	28	A
EAS	Single Pulse Avalanche Energy ²	245	mJ
IAS	Single Pulse Avalanche Current ²	7	A
P_D	Power Dissipation ($T_c=25^\circ\text{C}$)	66	W
	Power Dissipation – Derate above 25°C	0.53	W/ $^\circ\text{C}$
T_{STG}	Storage Temperature Range	-55 to 150	$^\circ\text{C}$
T_J	Operating Junction Temperature Range	-55 to 150	$^\circ\text{C}$

Thermal Characteristics

Symbol	Parameter	Typ.	Max.	Unit
$R_{\theta JA}$	Thermal Resistance Junction to ambient	---	62	$^\circ\text{C}/\text{W}$
$R_{\theta JC}$	Thermal Resistance Junction to Case	---	1.4	$^\circ\text{C}/\text{W}$

Electrical Characteristics ($T_J=25\text{ }^\circ\text{C}$, unless otherwise noted)
Off Characteristics

Symbol	Parameter	Conditions	Min.	Typ.	Max.	Unit
BV_{DSS}	Drain-Source Breakdown Voltage	$V_{GS}=0V, I_D=250\mu A$	600	---	---	V
I_{DSS}	Drain-Source Leakage Current	$V_{DS}=600V, V_{GS}=0V, T_J=25^\circ C$	---	---	1	μA
		$V_{DS}=480V, V_{GS}=0V, T_J=100^\circ C$	---	---	10	μA
I_{GSS}	Gate-Source Leakage Current	$V_{GS}=\pm 30V, V_{DS}=0V$	---	---	± 100	nA

On Characteristics

$R_{DS(ON)}$	Static Drain-Source On-Resistance	$V_{GS}=10V, I_D=3A$	---	1.0	1.2	Ω
$V_{GS(th)}$	Gate Threshold Voltage	$V_{GS}=V_{DS}, I_D=250\mu A$	2	3	4	V
gfs	Forward Transconductance	$V_{DS}=30V, I_D=3A$	---	8	---	S

Dynamic and switching Characteristics

Q_g	Total Gate Charge ^{3,4}	$V_{DS}=480V, V_{GS}=10V, I_D=4A$	---	29	45	nC
Q_{gs}	Gate-Source Charge ^{3,4}		---	5	8	
Q_{gd}	Gate-Drain Charge ^{3,4}		---	11.5	18	
$T_{d(on)}$	Turn-On Delay Time ^{3,4}	$V_{DD}=300V, V_{GS}=10V, R_G=25\Omega, I_D=4A$	---	26	52	ns
T_r	Rise Time ^{3,4}		---	30	60	
$T_{d(off)}$	Turn-Off Delay Time ^{3,4}		---	68	136	
T_f	Fall Time ^{3,4}		---	25	50	
C_{iss}	Input Capacitance	$V_{DS}=25V, V_{GS}=0V, F=1MHz$	---	920	1350	pF
C_{oss}	Output Capacitance		---	97	150	
C_{rss}	Reverse Transfer Capacitance		---	15	30	
R_g	Gate resistance	$V_{GS}=0V, V_{DS}=0V, F=1MHz$	---	2.3	4.6	Ω

Drain-Source Diode Characteristics and Maximum Ratings

Symbol	Parameter	Conditions	Min.	Typ.	Max.	Unit
I_S	Continuous Source Current	$V_G=V_D=0V, \text{Force Current}$	---	---	7	A
I_{SM}	Pulsed Source Current		---	---	14	A
V_{SD}	Diode Forward Voltage	$V_{GS}=0V, I_S=1A, T_J=25^\circ C$	---	---	1	V

Note :

1. Repetitive Rating : Pulsed width limited by maximum junction temperature.
2. $V_{DD}=50V, V_{GS}=10V, L=10mH, I_{AS}=7A, R_G=25\Omega, \text{Starting } T_J=25^\circ C$.
3. The data tested by pulsed , pulse width $\leq 300\mu s$, duty cycle $\leq 2\%$.
4. Essentially independent of operating temperature.

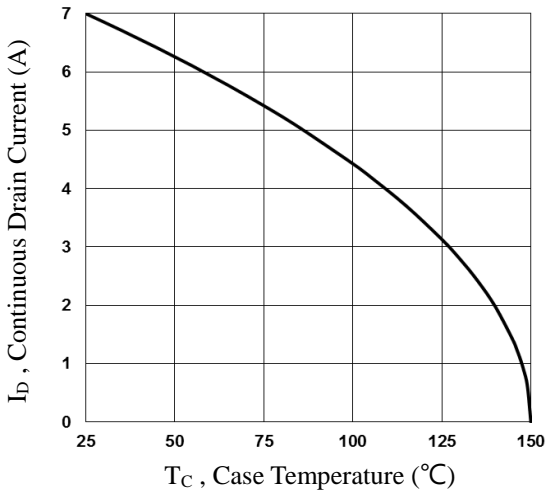


Fig.1 Continuous Drain Current vs. T_c

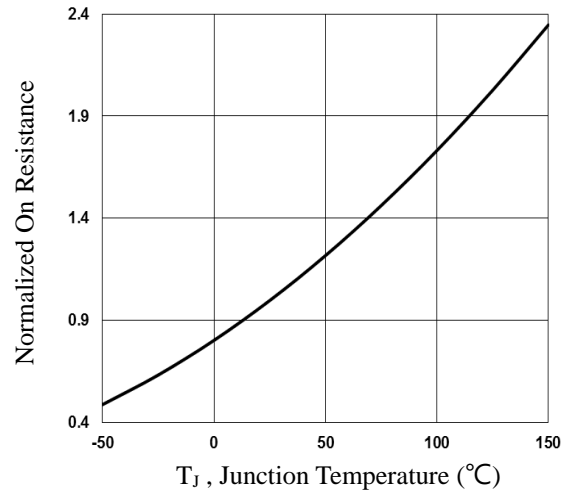


Fig.2 Normalized $R_{DS(on)}$ vs. T_j

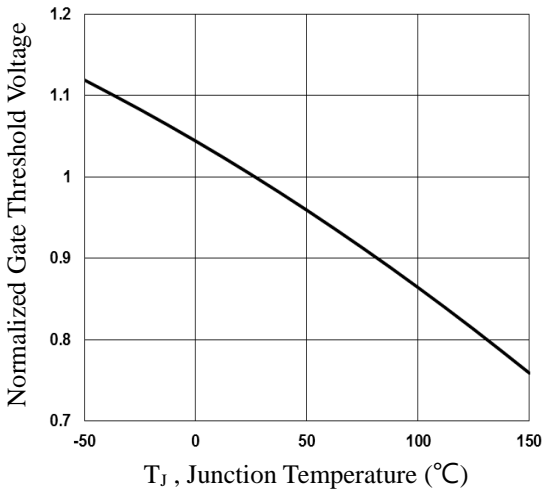


Fig.3 Normalized V_{th} vs. T_j

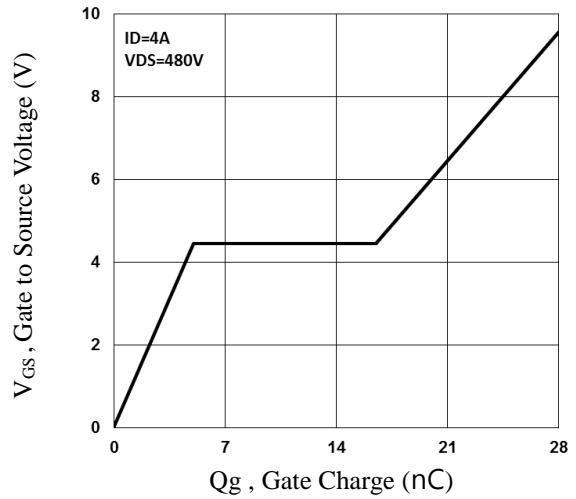


Fig.4 Gate Charge Waveform

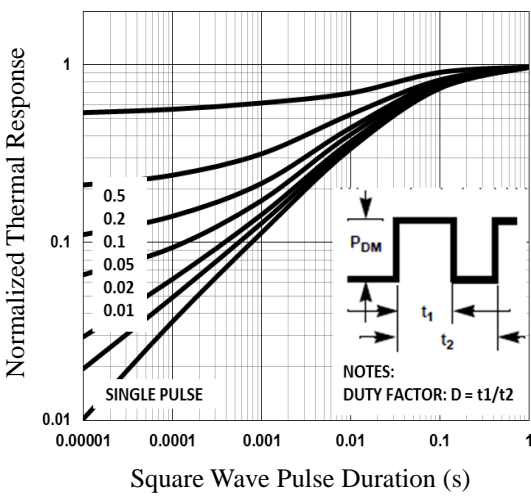


Fig.5 Normalized Transient Impedance

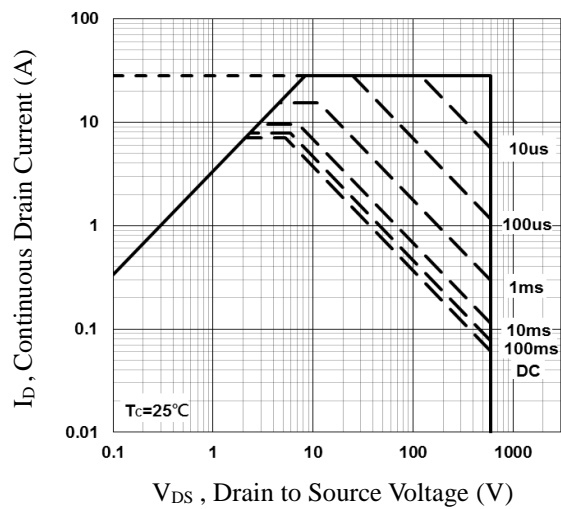


Fig.6 Maximum Safe Operation Area

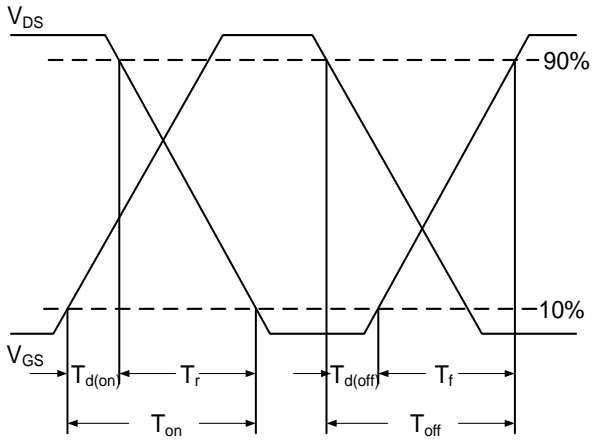


Fig.7 Switching Time Waveform

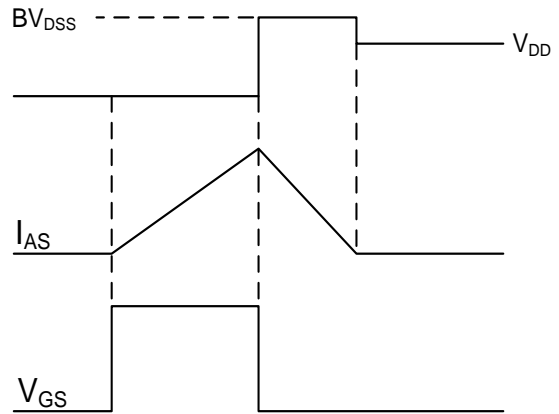


Fig.8 EAS Waveform

TO220 PACKAGE INFORMATION



Symbol	Dimensions In Millimeters		Dimensions In Inches	
	MAX	MIN	MAX	MIN
A	10.400	9.700	0.409	0.382
A1	8.900	7.400	0.350	0.291
A2	1.400	0.800	0.055	0.031
B	16.500	14.500	0.650	0.571
C	4.750	4.200	0.187	0.165
C1	1.500	1.100	0.059	0.043
D	1.000	0.600	0.039	0.024
E	4.000	3.300	0.157	0.130
E1	3.800	3.400	0.150	0.134
G	9.400	8.400	0.370	0.331
H	0.600	0.200	0.024	0.008
H1	6.850	6.200	0.270	0.244
K	2.850	2.100	0.112	0.083
L	14.000	12.500	0.551	0.492
L1	4.000	2.700	0.157	0.106
M	1.750	1.100	0.069	0.043
N	2.640	2.440	0.104	0.096